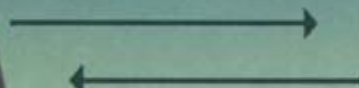


# Earthmate® GPS PN-20

## Getting Started Guide



DELOORME

## ***Getting Started with Your Earthmate GPS PN-20***

Use this guide to learn how to set up the Earthmate® GPS PN-20 and how to download and send DeLorme maps and data to the device.

**Note:** See the Earthmate GPS PN-20 User Manual and the DeLorme Topo USA 7.0 Help documentation for detailed instructions.

### ***Setting Up Your Device***

#### **Step 1 — Unpack your Earthmate GPS PN-20**

Your package includes the GPS receiver, two AA batteries, DVDs with detailed Topo USA 7.0 maps for your Earthmate GPS PN-20, and a DeLorme Topo USA® 7.0 DVD.

Your package may also include a 1GB SD card and reader, which allow you to quickly transfer large map packages for use with the Earthmate GPS PN-20. Using an SD card (up to 2GB) and reader is recommended if you plan to use Topo USA 7.0 maps for your entire state on the Earthmate GPS PN-20.

If you do not have an SD card and reader, use Topo USA 7.0 to save detailed maps of smaller areas for your Earthmate GPS PN-20 (see the *Sending DeLorme Data and Imagery to your Device* section) and continue to step 4 to learn how to turn on your device.

**Note:** If your package includes a rechargeable Lithium-ion battery or if you plan to use NiMH or Energizer E2 batteries, see the Earthmate GPS PN-20 User Manual for information about updating the battery type in the Device Setup.

#### **Step 2 — Copy PN-20 maps to the SD card**

To get the most map detail available, copy detailed maps for your area from the PN-20 Map DVD onto the 1GB SD card.

1. Insert the 1GB SD card into your SD card reader.
2. Place the PN-20 Map DVD into your DVD drive.

The installation prompts you to select the areas you want to copy to your SD card.

#### **Step 3 — Insert the SD card**

After you copy the detailed maps to your SD card, insert the card into the back of the Earthmate GPS PN-20, install the batteries, and attach the battery cover using the two D-ring screws.

#### **Step 4 — Explore with your Earthmate GPS PN-20**

Now you are ready to start exploring with your Earthmate GPS PN-20! Go outside, turn on the device, and press and hold the Power button until the blue welcome screen appears. After the startup process is complete, the Satellites Page displays.



**Note:** The first time you turn on your device it can take up to 10 minutes to determine your location. The device is downloading new satellite information for your area and triangulating your location. The next time you use your Earthmate GPS PN-20 it will locate your position much faster

When your device has a 3-D Fix. It shows a green arrow at your current location. Press the Page button to explore the four main pages; Satellites, Map, Compass, and Trip Info. Press the Menu button to view additional options for each page.

## Using Topo USA With Your Device

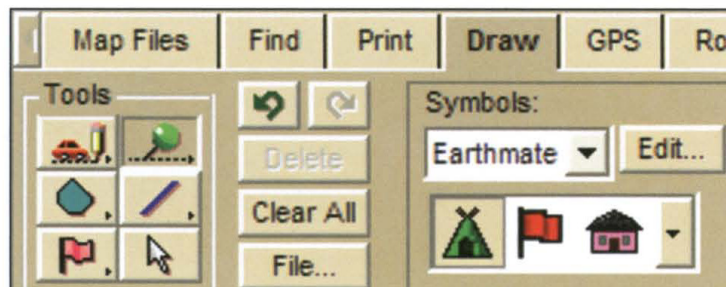
### Step 1 — Install and open Topo USA 7.0

To install Topo USA 7.0, follow the instructions in the Getting Started Guide for Topo USA 7.0 located in the software DVD case. Then, open the program.

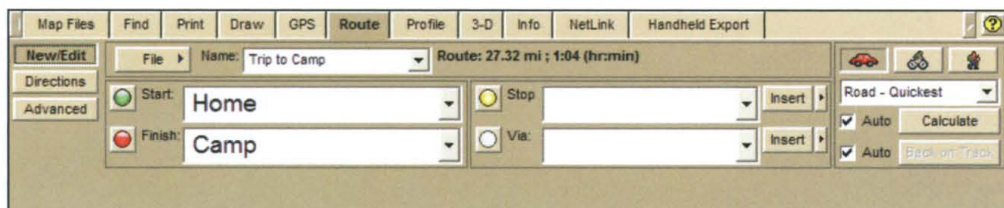
**Note:** Your Topo USA 7.0 software is on a DVD and requires a DVD drive to run — make sure you have a DVD drive. For the fastest program performance, follow the instructions to copy the Topo USA 7.0 data to your hard drive.

### Step 2 — Use Topo USA to plan your trip

1. Click the tabs at the bottom of the Topo USA map to view tools grouped by function. Use the Find tab to search for points on your trip. Use the tools in the Draw tab to create waypoints at the locations you would like to go to. A waypoint marks a location on the map that will be visible on the Earthmate GPS PN-20 later. For waypoints, choose a symbol from the Earthmate PN-20 symbol set in the **Symbols** drop-down list. These symbols display on the device.



2. Use the Route tab to plan and create your trail and road routes.



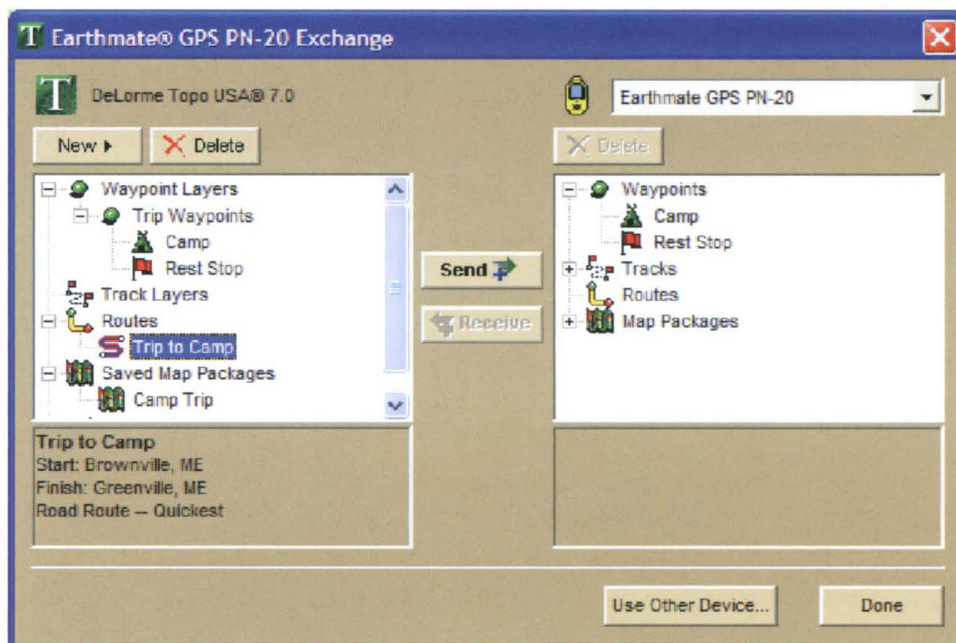
**Note:** Creating waypoints, tracks, and routes with Topo USA 7.0 and then transferring them to your device is faster than creating them on the Earthmate GPS PN-20.

### Step 3 — Use the Earthmate GPS PN-20 Exchange Dialog in Topo USA to send waypoints, tracks, and routes to the device

1. After you create the data you want to send, connect your device to your computer with the USB cord, and click the **Exchange** button  in the toolbar to open the Earthmate GPS PN-20 Exchange dialog.

**Note:** If you have not previously enabled the device, this will enable it. When you see a tree menu in the right pane of the dialog box, the device is enabled.

2. The Exchange dialog shows two lists of information. On the left side of the dialog you see all of the objects you created on your computer using Topo USA. On the right side of the dialog you see all of the objects on your Earthmate GPS PN-20. Use the Send and Receive buttons to move your data back and forth between Topo USA and the device.
3. Click the plus next to **Waypoints** list on the Topo USA side of the dialog. Click the waypoint to highlight it and click **Send**. Repeat this step for any tracks, routes or maps you have created.



4. Make sure you can see the waypoints, tracks, and routes in the right side of the dialog before you disconnect the device.



## ***Sending DeLorme Imagery and Data to Your Device***

You must install Topo USA 7.0 and enable your Earthmate GPS PN-20 before you download imagery and data. See *Exchanging GPS Data* for more information.

### **Step 1 — Download data**

You can use the NetLink tab to do many things, such as download imagery and maps for your area and get updates for your Earthmate GPS PN-20 and Topo USA software. To download available data from DeLorme, follow the instructions in the Datasets area of the NetLink tab. You can use the Data Download Dollars certificate included with your software to download USGS Quad maps, NOAA Nautical Charts, Color Aerial Imagery and many other types of data.

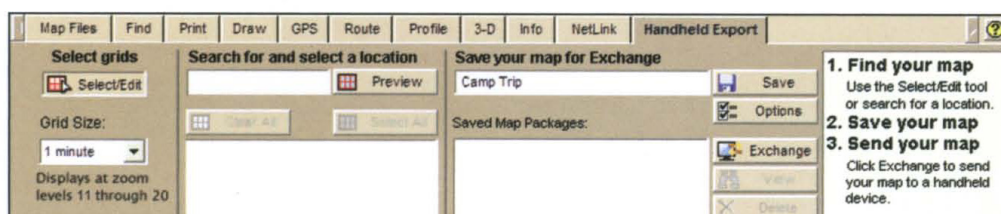
### **Step 2 — Create a map package that includes the DeLorme topographic data and the downloaded imagery**

1. Click the **Handheld Export** tab.
2. To manually select the map area, choose an appropriate grid size from the **Grid Size** drop-down list, click the **Select/Edit** button, and click grids on the map to add or remove them. Grids selected for export are shaded red.

OR

Select the grid size from the **Grid Size** drop-down list, type a location in the **Search** box, click a result in the results list, and then click the **Preview** button. The map area for the search result appears with shaded grids. Click **Select All** to select the previewed area or click **Select/Edit** to add or remove grids. Grids selected for export are shaded red.

3. To change the default package name, type a new name in the **Save your Map for Exchange** text box.
4. Click the **Save** button to save imagery and DeLorme topographic data.



### **Step 3 — Transfer the map to the device**

1. Click the **Exchange** button on the Handheld Export tab or on the toolbar to open the Earthmate GPS PN-20 Exchange dialog.
2. To save the map package on the internal memory of the device or on an SD card in the device, select **Earthmate GPS PN-20** from the drop-down list in the top right corner of the dialog box.

OR

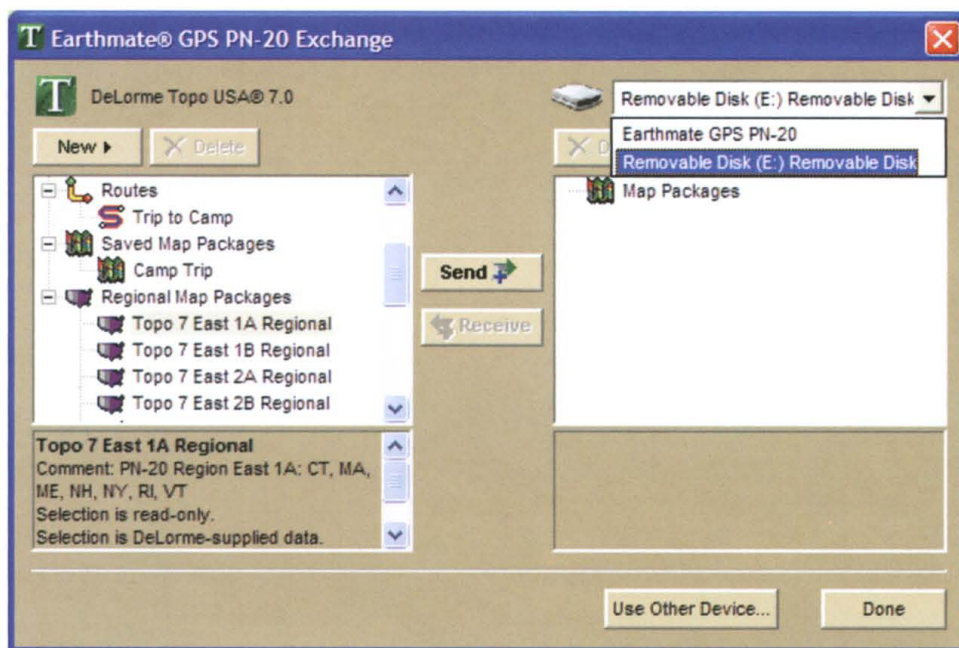


# Earthmate® GPS PN-20

You can also create and send maps to your Earthmate GPS PN-20 using the Earthmate GPS PN-20 Online Map Center at [data.delorme.com](http://data.delorme.com).

To save the map package on an SD card using an SD card reader, select the removable disk option for your SD card reader from the drop-down list in the top right corner of the dialog box.

**Note:** Using an SD card reader is the fastest method for transferring large map packages and using them in the device.



3. On the left side of the dialog under **Saved Map Packages**, click the map package to highlight it and click **Send**.
4. On the left side of the dialog under **Regional Map Packages**, click the regional map package for your area and click **Send**. Regional maps provide map detail necessary for routing.
5. Click **Done**.