



contact us at
www.magellangps.com

471 El Camino Real
Santa Clara, CA 95050

©2012 MiTAC International Corporation. The Magellan logo, Magellan, eXplorist and Vantage-Point are registered trademarks of MiTAC International Corporation, OneTouch is a trademark of MiTAC International Corporation, and all are used under license by MiTAC Digital Corp. All rights reserved. All other trademarks and registrations are the property of their respective owners.



MAGELLAN

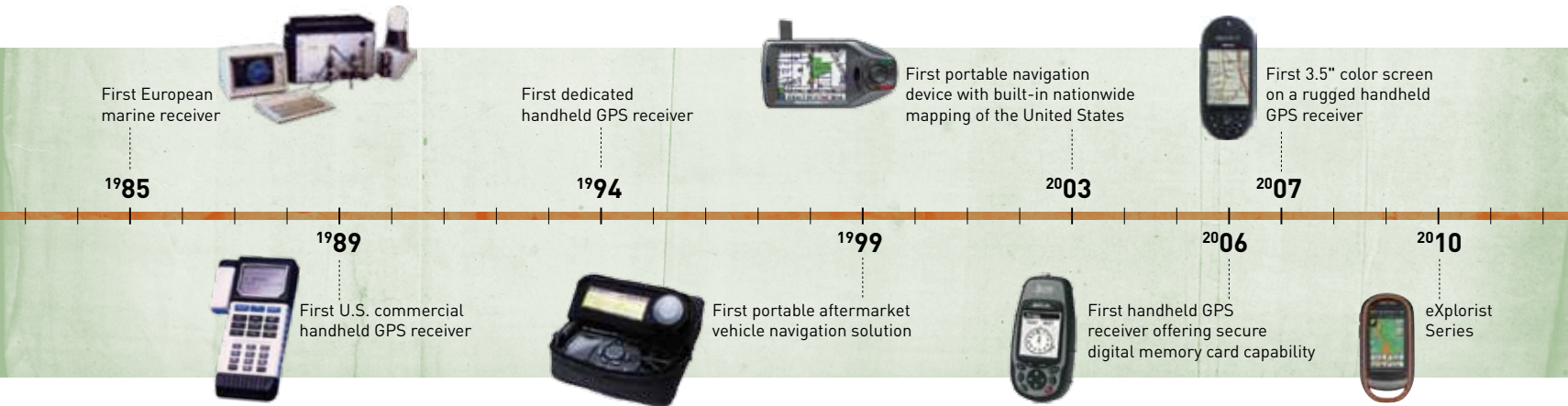
2012

eXplorist[®] Series

the first name in GPS

The inventor of the first handheld GPS device, Magellan® allows people to travel, work and explore the world around them. Founded in 1985, Magellan is one of the world's leading navigation brands with over 200 key patents in GPS technology and is the inventor of the award-winning RoadMate® and eXplorist® Series.

brand innovations



MAGELLAN
eXplorist® Series

experience capture share

The eXplorist Series of rugged, waterproof, handheld GPS receivers is perfect for any outdoor adventure. Whether you're hiking, geocaching, hunting, fishing or any other outdoor activity, the eXplorist Series provides the innovative features you need right at your fingertips.

eXplorist® series features

Packed with the technologies you need for life outside.



Built-in Camera + Microphone
Integrated camera, microphone and speaker enable outdoor enthusiasts to record geo-referenced photos, videos and voice notes.



Active Suspend Mode
Continues to track while conserving battery power



Programmable Buttons
Set the buttons to mark a waypoint, take a photo and more



10,000 Geocaches
The eXplorist devices hold up to 10K geocaches



Paperless Geocaching
Download and view more than 20 unique characteristics of each cache



SiRFstar III
High-sensitivity GPS for 3-5 meter accuracy with WAAS/EGNOS/MSAS support



IPX-7
Can be submerged up to 30 minutes up to a depth of 1 meter



Silent Alarms
Keep you on course, notify you of arrival, keep you in the right areas and more



GPX Compatible
Allows for the exchange of GPS data



VantagePoint
Manage your outdoor GPS maps from your computer



AA Batteries
Up to 18 hours of battery life so you can go all day long



Micro SD Slot
Add maps or other content to your eXplorist with a Micro SD card



Area & Perimeter Calculation
Calculate the area of a property or parcel of land



Touchscreen
Easy to use sunlight readable transfective touchscreen



Barometric Altimeter
Track altitude information and weather patterns



Electronic Compass
Determine your direction while standing still



OneTouch™ Favorites Menu
Instant access to bookmarks of your favorite places



Driving Directions
Voice prompted turn-by-turn navigation



Waypoints
Mark trailheads or other important points along your way



Breadcrumbs
Find your way back after all your outdoor adventures



3D Mapping
2D or 3D viewing angles



3 GB Memory
eXplorist Series devices come with up to 3 GB memory



Geofencing
Create a boundary around any location and know when you enter or exit

content library

The world's best maps and content at your fingertips



Magellan World Edition Map

The World Edition base map includes a complete road network in the United States, Canada, Western Europe, Australia and major roads throughout the rest of the world that provides cartographic orientation in almost any location. This unique, preloaded map also includes water features, urban and rural land use, and a realistic shaded-relief background.



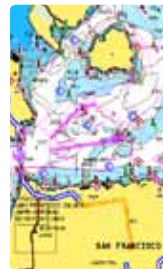
Magellan Summit Series Maps

The Magellan Summit Series Maps are highly detailed topographic maps based on 1:24,000-scale source maps. They include contour lines, land use areas, trails, waterways and points of interest. Locate the nearest trailhead. Search nearest bike shops, fuel stations or potable water source. Navigate safely in 3D perspective view while knowing the boundaries between private and public lands. Full country and regional versions available.



Magellan City Series Maps

City Series Maps allow your eXplorist device to navigate through the city streets with turn-by-turn directions on your way to escaping to your favorite open spaces. Enter a variety of destinations, including address book entries, waypoints, geocaches or previous destinations. City Series is available in both North American and European versions.



Navionics Marine Maps

Enjoy Navionics Marine and Lake Charts on your eXplorist anytime, anywhere. Whether you are contemplating your next outing or you are happily underway, Navionics works together with your Magellan eXplorist® handheld GPS to facilitate planning, checking charts, and sharing your experiences with family and friends. Premium Navionics maps include award-winning plotter cartography and mobile applications, user-generated content and the freshest data.



VantagePoint

Use Magellan's free VantagePoint PC application to view all of your maps, waypoints, geocaches, trails and routes in one, easy-to-use application. Analyze your maps in 3D-turn, tilt, and "fly through" the terrain with the touch of the mouse. Create custom routes and mark waypoints with images, sounds and description messages.



National Geographic Topo! Subscription

With the Nat Geo Topo! annual subscription, you can download all you want from Magellan's VantagePoint desktop mapping application and keep everything you've downloaded after your subscription has ended. Maps are 1:24K USGS, 1:100K USGS.



TRAX Hunt Map Series

Magellan and Kirsch's Outdoor Products team up to offer a superior advantage for hunters with the TRAX hunt map series. TRAX map features typically include PLOTS Units, Waterfowl Production Areas (WPA), grasslands, Wildlife Management Areas (WMA), National Wildlife Refuges (NWR), National and State Parks, forests, Big Game Units, major wetlands, hiking trails, section lines, Bureau Of Indian Affairs tribal lands and more.



DigitalGlobe Annual Subscription

Experience the best satellite imagery available on the market today. Thanks to a seamless process, you can now transfer beautiful satellite maps of your preferred areas directly onto your Magellan eXplorist without any geographic restrictions. You will enjoy realistic and detailed photos of your surroundings for an improved experience during your outdoor activities.



U.S. TrailMaps

Detailed ATV and snowmobile trail maps for your Magellan eXplorist. Gone are the hours needed to locate, research and plan your rides. Access ATV trails with real-time GPS navigation. Find intersections, parking areas, access points, campsites and more with U.S. TrailMaps. Map trails for the 48 contiguous U.S. states.

eXplorist® 710

Navigate from doorstep to trailhead to summit and back

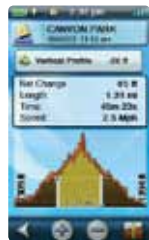


Magellan World Edition preloaded map covering more than 200 countries

Magellan Summit Series preloaded high-res topographic map

Magellan City Series preloaded routable map with spoken, turn-by-turn directions

Touchscreen Navigation Navigate from your doorstep to the trailhead and onto the summit without having to load or switch to different maps. The eXplorist 710 provides preloaded maps, including Magellan World Edition, Summit Series topographic mapping and City Series turn-by-turn driving map. This advanced, rugged and waterproof (IPX-7) handheld GPS with premium outdoor navigation and experience recording includes a built-in camera and mic so you can relive and retrace your outdoor experiences on the device or share online. The eXplorist 710 also includes 3-inch daylight visible touchscreen, paperless geocaching, expandable memory, a 3-axis electronic compass and barometric altimeter.



Camera with auto focus and digital zoom, integrated microphone and speaker to geotag your photos, videos and voice notes



Barometric altimeter for accurate elevation information and weather pattern tracking



3-axis electronic compass for precise orientation even while standing still

eXplorist® 710 specifications

device

- Dimensions
2.57" x 5.04" x 1.45"
65.3 mm x 128 mm x 36.8 mm
- Weight
6.87 oz
195 g
- Battery Type – 2 x AA
- 16-Hour Battery Life
- 3.2 Mega Pixel Camera
- Microphone
- Waterproof IPX-7
- Speaker
- 400 MHz CPU
- MicroSD Expandable Memory
- Temperature Range
14°F to 140°F
-10°C to 60°C
- Suspend Mode
- 3 GB Available User Storage
- 8 GB Internal Memory

screen

- WQVGA 240 x 400 Display Resolution
- 3.0" Screen Size
- Color, Transflective Display Type
- Touchscreen

GPS + sensors

- GPS Accuracy Up to 3–5 meters
- High-Sensitivity GPS SiRFstarIII™
- Multidirectional Patch Antenna
- 3-Axis Electronic Compass
- Barometric Altimeter
- WAAS/EGNOS/MSAS

interface + communications

- Communication Protocol USB Mass Storage
- USB Port
- NMEA Output
- PC Compatible

mapping + navigation

- Preloaded Maps
 - + World Edition
 - + Summit Series
 - + City Series
- Uploadable Maps
- Points of Interest
- Turn-by-Turn Routing
- Vertical Profile
- Area Calculation
- Hunt & Fish Calendar
- Sun & Moon Information
- Coordinates Systems & Datums
- User Grid
- OneTouch Favorites Menu
- Audible Proximity Alarms
- Silent Proximity Alarms
- Visit magellangps.com for a full list of compatible maps

user-generated content

- Accepts GPX Files
- 2,000 Waypoints
- 200 Routes
- 10,000 Geocaches
- 500 Legs Per Route
- Paperless Geocaching
- Picture Viewer
- 200 Tracks
- 10,000 Points Per Track
- User Data Online Sharing

eXplorist® 610

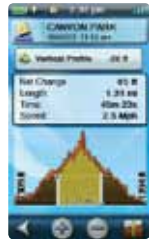
Navigate from trailhead to summit and back



Magellan World Edition preloaded map covering more than 200 countries

Magellan Summit Series preloaded high-res topographic map

Touchscreen Navigation The eXplorist 610 takes your outdoor adventures to the next level with superior-preloaded mapping including Magellan World Edition and Summit Series topographic 1:24,000-scale, high-res map. Advanced, rugged and waterproof (IPX-7) handheld GPS with premium outdoor navigation and experience recording including a built-in camera and mic so you can relive your outdoor experiences with geotagged photos, videos and voice notes on the device or share online. It also includes a 3-inch daylight visible touchscreen, paperless geocaching, expandable memory, 3-axis electronic compass and barometric altimeter. Magellan City Series is available for download (sold separately).



Camera with auto focus and digital zoom, integrated microphone and speaker to geotag your photos, videos and voice notes



Barometric altimeter for accurate elevation information and weather pattern tracking



3-axis electronic compass for precise orientation even while standing still

eXplorist® 610 specifications

device

- Dimensions
2.57" x 5.04" x 1.45"
65.3 mm x 128 mm x 36.8 mm
- Weight
6.87 oz
195 g
- Battery Type – 2 x AA
- 16-Hour Battery Life
- 3.2 Mega Pixel Camera
- Microphone
- Waterproof IPX-7
- Speaker
- 400 MHz CPU
- MicroSD Expandable Memory
- Temperature Range
14°F to 140°F
-10°C to 60°C
- Suspend Mode
- 500 MB Available User Storage
- 4GB Internal Memory

screen

- WQVGA 240 x 400 Display Resolution
- 3.0" Screen Size
- Color, Transflective Display Type
- Touchscreen

GPS + sensors

- GPS Accuracy Up to 3–5 meters
- High-Sensitivity GPS SiRFstarIII™
- Multidirectional Patch Antenna
- 3-Axis Electronic Compass
- Barometric Altimeter
- WAAS/EGNOS/MSAS

interface + communications

- USB Mass Storage Communication Protocol
- USB Port
- NMEA Output
- PC Compatible

mapping + navigation

- Preloaded Maps
 - + World Edition
 - + Summit Series USA
- Uploadable Maps
- Points of Interest
- Turn-by-Turn Routing
- Vertical Profile
- Area Calculation
- Hunt & Fish Calendar
- Sun & Moon Information
- Coordinates Systems & Datums
- User Grid
- OneTouch Favorites Menu
- Audible Proximity Alarms
- Silent Proximity Alarms
- Visit magellangps.com for a full list of compatible maps

user-generated content

- Accepts GPX Files
- 2,000 Waypoints
- 200 Routes
- 10,000 Geocaches
- 500 Legs Per Route
- Paperless Geocaching
- Picture Viewer
- 200 Tracks
- 10,000 Points Per Track
- User Data Online Sharing

eXplorist® 510

Premium, rugged, handheld GPS with camera, microphone and speaker to record all your adventures and navigate the outdoors



Magellan World Edition preloaded map covering more than 200 countries

Touchscreen Navigation Advanced, rugged and waterproof handheld GPS with premium outdoor navigation and experience recording including a built-in camera and mic for geotagging photos, videos and voice notes so you can relive your outdoor experiences on the device or share online. The eXplorist 510 also includes a 3-inch daylight-visible touchscreen, highly detailed, preloaded Magellan World Edition Map, paperless geocaching and expandable memory. Magellan City Series and Summit Series are available for download (sold separately).



Camera with auto focus and digital zoom, integrated microphone and speaker to geotag your photos, videos and voice notes



3-inch, sunlight-readable touchscreen, 4-corners touchscreen interface and two customizable hard buttons



Relive the journey on the device on your computer, or share online

eXplorist® 510 specifications

device

- Dimensions
2.57" x 5.04" x 1.45"
65.3 mm x 128 mm x 36.8 mm
- Weight
6.87 oz
195 g
- Battery Type – 2 x AA
- 15-Hour Battery Life
- 3.2 Mega Pixel Camera
- Microphone
- Waterproof IPX-7
- Speaker
- 400MHz CPU
- MicroSD Expandable Memory
- Temperature Range
14°F to 140°F
-10°C to 60°C
- Suspend Mode
- 500 MB Available User Storage
- 2GB Internal Memory

screen

- WQVGA 240 x 400 Display Resolution
- 3.0" Screen Size
- Color, Transflective Display Type
- Touchscreen

GPS + sensors

- GPS Accuracy Up to 3–5 meters
- High-Sensitivity GPS SiRFstarIII™
- Multidirectional Patch Antenna
- WAAS/EGNOS/MSAS

interface + communications

- USB Mass Storage Communication Protocol
- USB Port
- NMEA Output
- PC Compatible

mapping + navigation

- Preloaded Maps
+ World Edition
- Uploadable Maps
- Points of Interest
- Vertical Profile
- Area Calculation
- Hunt & Fish Calendar
- Sun & Moon Information
- Coordinates Systems & Datums
- User Grid
- OneTouch Favorites Menu
- Audible Proximity Alarms
- Silent Proximity Alarms
- Visit magellangps.com for our full offering of compatible maps

user-generated content

- Accepts GPX Files
- 2,000 Waypoints
- 200 Routes
- 10,000 Geocaches
- 500 Legs Per Route
- Paperless Geocaching
- Picture Viewer
- 200 Tracks
- 10,000 Points Per Track
- User Data Online Sharing

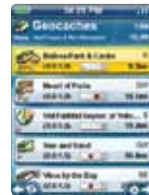
eXplorist® 310

Power-packed and rugged handheld GPS for essential outdoor navigation



Magellan World Edition preloaded map covering more than 200 countries

Hard-Button Navigation The Magellan eXplorist 310 GPS has everything you need to navigate your outdoor adventures. With its brilliant, daylight-visible 2.2-inch color screen with rich graphics and a simple user interface all packed into a rugged and waterproof (IPX-7) device you can explore worry-free. The 310 is powered by two AA batteries for up to 18 hours of outdoor adventure along with a highly-sensitive SiRFstarIII™ GPS chipset that provides 3–5 meter accuracy. The eXplorist 310 is great for geocaching with a simple interface and the ability to sort and search thousands of geocaches. The product comes packed with outdoor GPS features, such as waypoint creation; preloaded, highly-detailed Magellan World Edition map; active tracking; and track summary. Magellan Summit Series Regions are available for download (sold separately).



Brilliant, 2.2" sunlight-readable color display



Paperless geocaching and free 30-day Premium Membership to geocaching.com



Dashboard screen shows a minicompass for quick reference and customizable navigation data fields

eXplorist® 310 specifications

device

- Dimensions
2.2" x 4.4" x 1.4"
56 mm x 111 mm x 36 mm
- Weight
5.20 oz
147 g
- Battery Type – 2 x AA
- 18-Hour Battery Life
- Waterproof IPX-7
- 400 MHz CPU
- Temperature Range
14°F to 140°F
-10°C to 60°C
- Suspend Mode
- 500 MB Available User Storage
- 2 GB Internal Memory

screen

- QVGA 240 x 320 Display Resolution
- 2.2" Screen Size
- Color, Transflective Display Type

GPS + sensors

- GPS Accuracy Up to 3–5 meters
- High-Sensitivity GPS SiRFstarIII™
- Multidirectional Patch Antenna
- WAAS/EGNOS/MSAS

interface + communications

- Communication Protocol USB Mass Storage
- USB Port
- NMEA Output
- PC Compatible

mapping + navigation

- Preloaded Maps
+ World Edition
- Uploadable Maps
- Points of Interest
- Vertical Profile
- Area Calculation
- Hunt & Fish Calendar
- Sun & Moon Information
- Coordinates Systems & Datums
- Audible Proximity Alarms

user-generated content

- Accepts GPX Files
- 1,000 Waypoints
- 50 Routes
- 10,000 Geocaches
- 50 Legs Per Route
- Paperless Geocaching
- Picture Viewer
- 250 Tracks
- 10,000 Points Per Track
- User Data Online Sharing

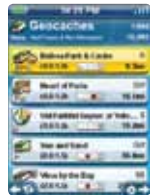
eXplorist® 110

Waterproof, handheld GPS receiver with core outdoor navigation features



Magellan World Edition preloaded map covering more than 200 countries

Hard-Button Navigation The Magellan eXplorist 110 GPS receiver is ready to use right out-of-the-box with a brilliant, 2.2-inch color screen with rich graphics and a simple user interface all packed into a rugged and waterproof (IPX-7) device. The 110 is powered by two AA batteries for up to 18 hours so you can explore all day. A highly sensitive SiRFstarIII™ GPS chipset provides 3–5 meter accuracy. With its easy-to-use interface, the eXplorist 110 is great for basic navigation. The product comes with essential outdoor GPS features, such as waypoint creation, preloaded Magellan World Edition Map, active tracking and track summary.



Brilliant, 2.2" sunlight-readable color display



Perfect for fishing, hiking, hunting, camping



Paperless geocaching

eXplorist® 110 specifications

device

- Dimensions
2.2" x 4.4" x 1.4"
56 mm x 111 mm x 36 mm
- Weight
5.20 oz
147 g
- Battery Type – 2 x AA
- 18-Hour Battery Life
- Waterproof IPX-7
- 400 MHz CPU
- Temperature Range
14°F to 140°F
-10°C to 60°C
- Suspend Mode
- 500 MB Available User Storage
- 2 GB Internal Memory

screen

- QVGA 240 x 320 Display Resolution
- 2.2" Screen Size
- Color, Transflective Display Type

GPS + sensors

- GPS Accuracy Up to 3–5 meters
- High-Sensitivity GPS SiRFstarIII™
- Multidirectional Patch Antenna
- WAAS/EGNOS/MSAS

interface + communications

- Communication Protocol USB Mass Storage
- USB Port
- NMEA Output
- PC Compatible

mapping + navigation

- Preloaded Maps
+ World Edition
- Points of Interest
- Vertical Profile
- Area Calculation
- Hunt & Fish Calendar
- Sun & Moon Information
- Coordinates Systems & Datums
- Audible Proximity Alarms

user-generated content

- Accepts GPX Files
- 500 Waypoints
- 25 Routes
- 500 Geocaches
- 25 Legs Per Route
- Paperless Geocaching
- Picture Viewer
- 10 Tracks
- 5,000 Points Per Track
- User Data Online Sharing

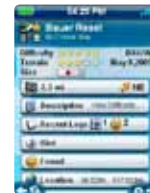
eXplorist® GC

100% Dedicated to Geocaching Adventures



World Edition preloaded map covering more than 200 countries

Hard-Button Navigation Magellan eXplorist GC is the first dedicated GPS device for geocaching that includes out-of-the-box paperless geocaching; seamless connection to geocaching.com; a brilliant, 2.2-inch color screen with rich graphics; and a simple user interface all packed into a rugged and waterproof device. The device is powered by two AA batteries for up to 18 hours of outdoor adventure along with a highly sensitive SiRFstarIII™ GPS chipset that provides 3.5 meter accuracy. The GC is made for geocaching with an uncomplicated interface and the ability to sort and search thousands of geocaches. Mark your find and quickly add field notes. Send all your logs to geocaching.com once you return from your day's adventure. eXplorist GC has tons of fun and familiar graphics, such as smiley faces for logs and merit-based awards to show off your geocaching expertise. Additionally, the product comes packed with common outdoor GPS features, such as waypoint creation, a preloaded Magellan World Edition Map and trip summary.



Brilliant, 2.2" sunlight readable color display



Preloaded with the world's most popular geocaches, plus holds up to 10K caches total



Paperless geocaching lets you download and view more than 20 unique characteristics of each cache and view, search and filter on the device

eXplorist® GC specifications

device

- Dimensions
2.2" x 4.4" x 1.4"
56 mm x 111 mm x 36 mm
- Weight
5.20 oz
147 g
- Battery Type – 2 x AA
- 18-Hour Battery Life
- Waterproof IPX-7
- 400 MHz CPU
- Temperature Range
14°F to 140°F
-10°C to 60°C
- Suspend Mode
- 500 MB Available User Storage
- 2 GB Internal Memory

screen

- QVGA 240 x 320 Display Resolution
- 2.2" Screen Size
- Color, Transflective Display Type

GPS + sensors

- GPS Accuracy Up to 3–5 meters
- High-Sensitivity GPS SiRFstarIII™
- Multidirectional Patch Antenna
- WAAS/EGNOS/MSAS

interface + communications

- Communication Protocol USB Mass Storage
- USB Port
- NMEA Output
- PC Compatible

mapping + navigation

- Preloaded Maps
+ World Edition
- Coordinates Systems & Datums
- Audible Proximity Alarms

user-generated content

- Accepts GPX Files
- 500 Waypoints
- 10,000 Geocaches
- Paperless Geocaching
- Picture Viewer
- 1 Track
- 5,000 Points Per Track
- User Data Online Sharing

trophy

it's amazing where a great guide will take you

Get your trophy every time with the eXplorist Series outdoor GPS devices, premium content, maps and accessories designed for the hunter.

Geotag photos or videos of buck rubs with the built-in camera. Record geotagged voice notes with the built-in microphone. See high-resolution imagery of the terrain with DigitalGlobe downloads. Silent alarms keep you on course, notify you of arrival and keep you in the right areas without disturbing your prey. The eXplorist also includes premium maps for the most accurate navigation on your hunt so you can focus on finding your prey. The eXplorist also includes Hunt and Fish Calendars and Sun and Moon Calendars.

MAGELLAN hunt

710

610

510

310

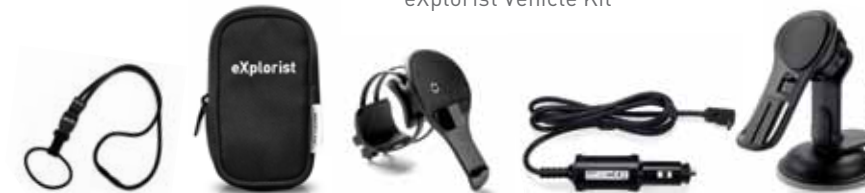


DIGITALGLOBE
High-Res Satellite Photo Subscriptions

KIRSCH'S
OUTDOOR PRODUCTS
TRAX maps



eXplorist Lanyard
eXplorist Carry Case
eXplorist Handlebar Mount
eXplorist Vehicle Kit



the perfect catch

for great fish stories

The eXplorist premium handheld GPS units are Navionics compatible. That means the best marine maps available. Navionics offers the ultimate in high-resolution fishing bathymetry. Find fish-holding structure, seasonal patterns and shallow-water cruising lanes with new high-definition, 1 ft contouring on inshore coastal waters, bays and rivers, plus accurate detail in skinny backwater. An incredible resource packed with fish-finding details such as wrecks, sea bed composition, tides, currents, local fishing areas, vegetation, offshore bathymetry and nav aids.

Geotag photos or videos of your favorite fishing spot and record geotagged voice notes with the built-in microphone. With geotagged photos, videos and voice notes, you can navigate back to the spot where you recorded them. You can keep the best spots secret or share online. Silent alarms keep you on course, notify you of arrival and keep you in the right areas without disturbing the fish. The eXplorist also includes premium maps for the most accurate navigation to your trip so you can focus on finding your fish and not on finding your way. The eXplorist also includes Hunt and Fish Calendars and Sun and Moon Calendars.

MAGELLAN **fish**

710

610

510



NAVIONICS
THE LEADER IN ELECTRONIC CHARTS
Premium Marine Maps
and Lake Charts



eXplorist Lanyard
eXplorist Carry Case
eXplorist Multi-Purpose Mount



own the trail

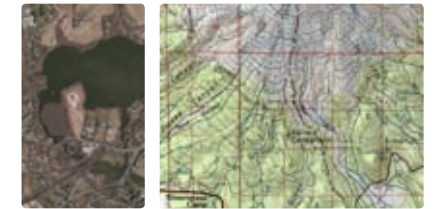
experience the unforgettable

These handheld GPS units include the premium topo map, Magellan Summit Series that contains high-resolution, digital terrain information (1:24,000 scale) and contour lines depicting approximate elevation above sea level.

The eXplorist Series comes power-packed with an electronic compass and barometric altimeter so you can know your direction, even while standing still. Track altitude and weather information with the barometer.

Geotag photos, videos and voice notes from your favorite hikes, views or camping spots with the built-in camera and mic... you can navigate back to the spot where you recorded them. Hike the same trail next year or share online. Silent alarms keep you on course, notify you of arrival and keep you in the right areas without disturbing the wildlife.

MAGELLAN hike



DIGITALGLOBE®

High-Res Satellite Imagery Subscriptions



MAPS

Nat Geo Topo! Maps



eXplorist Lanyard
eXplorist Carry Case
eXplorist Handlebar Mount



100%

dedicated to geocaching

eXplorist GC is built for a premium geocaching experience. Whether you're a seasoned geocacher with more than a thousand finds or a newbie that's interested in getting in on the action, eXplorist GC provides all the tricks of the trade.

Most important, eXplorist GC supports paperless geocaching, which allows you to download more than 20 unique characteristics of each cache, including name, location, description, hider, size, difficulty, terrain, hint, spoilers, attributes and last 20 user logs among a number of other details. eXplorist GC comes with the most popular geocaches preloaded to provide a unique, out-of-box experience. Turn it on and go!

To customize your geocaching experience with caches that meet your specific criteria, the eXplorist GC has seamless connection to geocaching.com. This allows you to search millions of caches worldwide. With a click of the mouse, you can transfer the information with the Send to GPS feature. Additionally, with a Premium Membership to geocaching.com, you can create custom Pocket Queries and update your device with fresh cache information easily anytime you want.

MAGELLAN geocaching

710

610

510

310

110

GC



VantagePoint



geocaching.com



eXplorist Lanyard
eXplorist Carry Case
eXplorist Geocoin



accessories

Exclusively for the Magellan eXplorist® Series



monkey cache geocoin

- Each coin is assigned a unique tracking ID
- Add your story or live vicariously through your coin's adventures as it travels from cache to cache
- Activation instructions included with each coin



eXplorist handlebar mount

- Navigate while you ride!
- Zip tie mounting supports a variety of handlebar sizes
- Adjusts in 45° increments for horizontal and vertical viewing angles
- Sturdy and secure



multi-purpose mount

- Secures your eXplorist® on boats or all-terrain vehicles
- Doubles as a desktop mount for easy PC synchronization
- Easy to install with either 4 screws or strong adhesive strip
- Adjustable for a variety of viewing angles



vehicle kit

- Includes everything you need to use your eXplorist Series GPS receiver in your vehicle
- Suction mount securely holds your eXplorist to the windshield or dashboard
- Included vehicle power adaptor enables external power
- Compatible with all eXplorist Series receivers



eXplorist series lanyard

- Wear your eXplorist around your neck
- Strong and durable design
- 5 mm diameter, 50 cm long
- Safety "Break Away"
- GPS quick release clip



eXplorist carry case [510, 610 & 710] [GC, 110 & 310]

- Protect your GPS with a rugged canvas exterior and soft felt interior
- Position your GPS to acquire the best satellite signals
- Attaches to a belt, strap or backpack
- Cloth and plastic zipper design reduces noise

merchandising



acrylic displays for eXplorist

- Small size is great for glass cases
- Optional product description cards available
- Size: Display Alone - 2.05" W x 2.25" H x 6.50" D
- Display with Product Description Card - 5.50" W x 2.25" H x 6.50" D
- Contact Magellan for details



eXplorist counter display

- Small footprint is perfect for counter displays
- Graphics are interchangeable depending on product displayed
- Size: 5.50" W x 5.75" D x approximately 7" H (depending on the graphic used)
- Contact Magellan for details

[illegible]